

DATA SHEET

RF+Bluetooth CCT Remote Controller

Item number

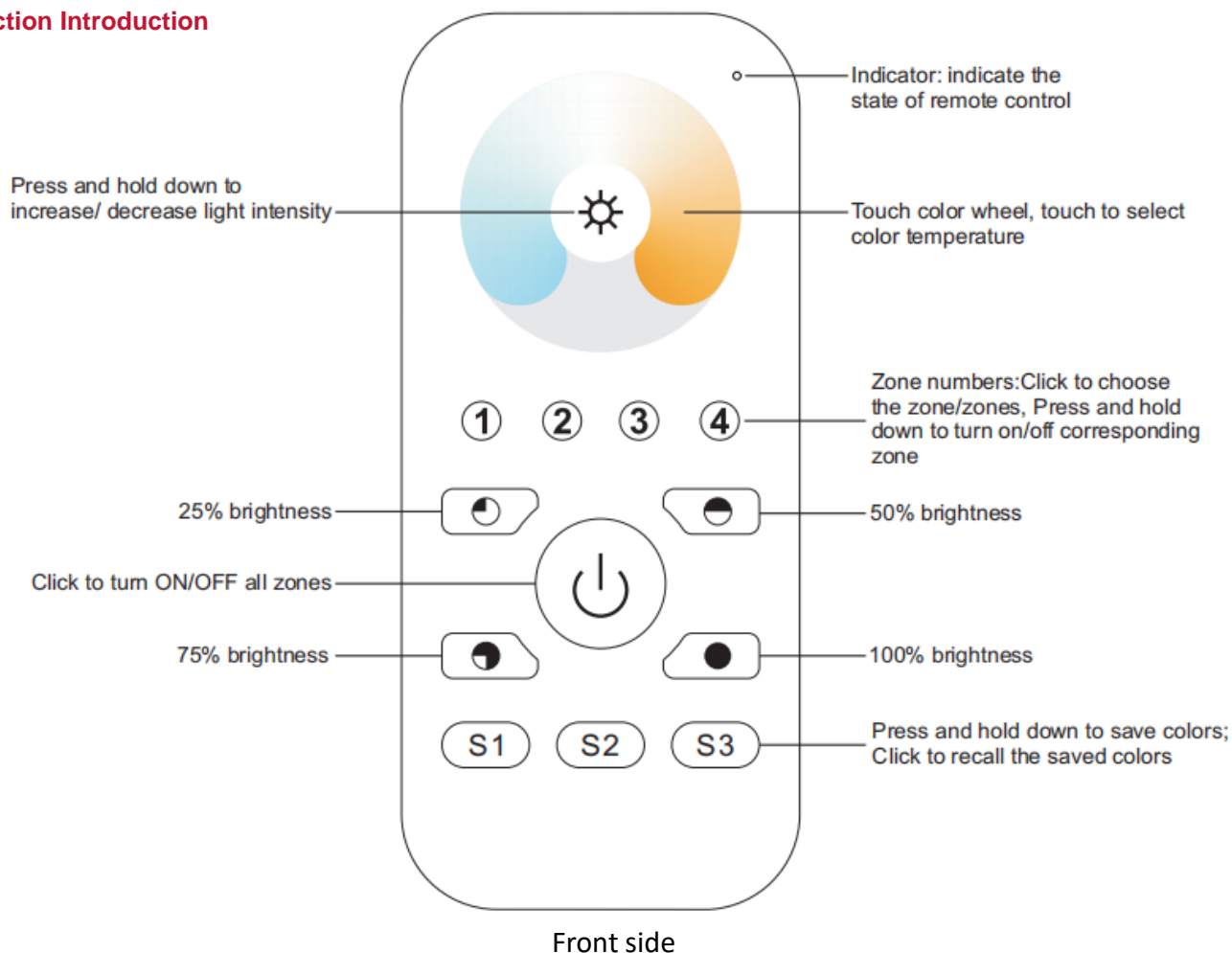
CT-DL-1017



- Control 4 zones of RF+Bluetooth receivers separately.
- CCT color controller
- High sensitive & high stable, fast & precise CCT color control.
- Compatible with all universal series RF+Bluetooth receivers
- 1 receiver can be paired by max 8 different remote controls.
- Waterproof grade: IP20

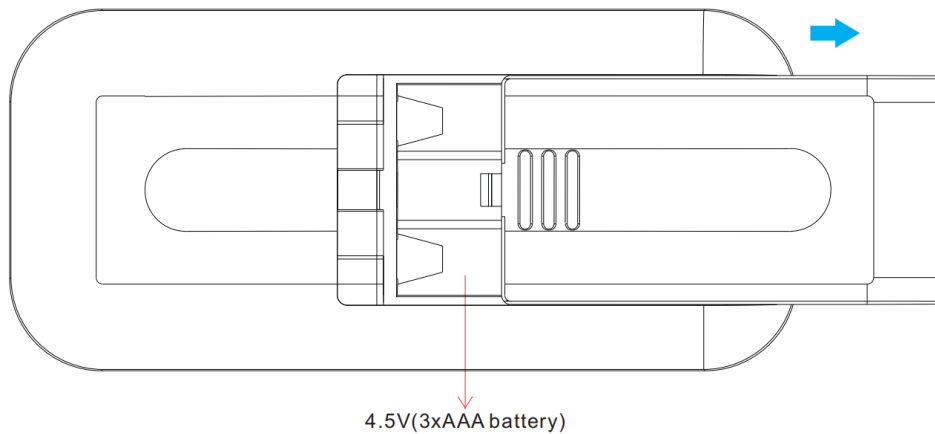


Function Introduction



DATA SHEET**RF+Bluetooth CCT Remote Controller****Item number**

CT-DL-1017

**Bottom side****Technical data****GENERAL**

Output	RF+Bluetooth signal
Operation Frequency	2.4GHz
Power Supply	4.5V(3xAAA battery)
Operating temperature	0-40°C
Relative humidity	8% to 80%
Dimensions	120x55x17mm

Safety & Warnings

- DO NOT install with power applied to device.
- DO NOT expose the device to moisture.

DATA SHEET

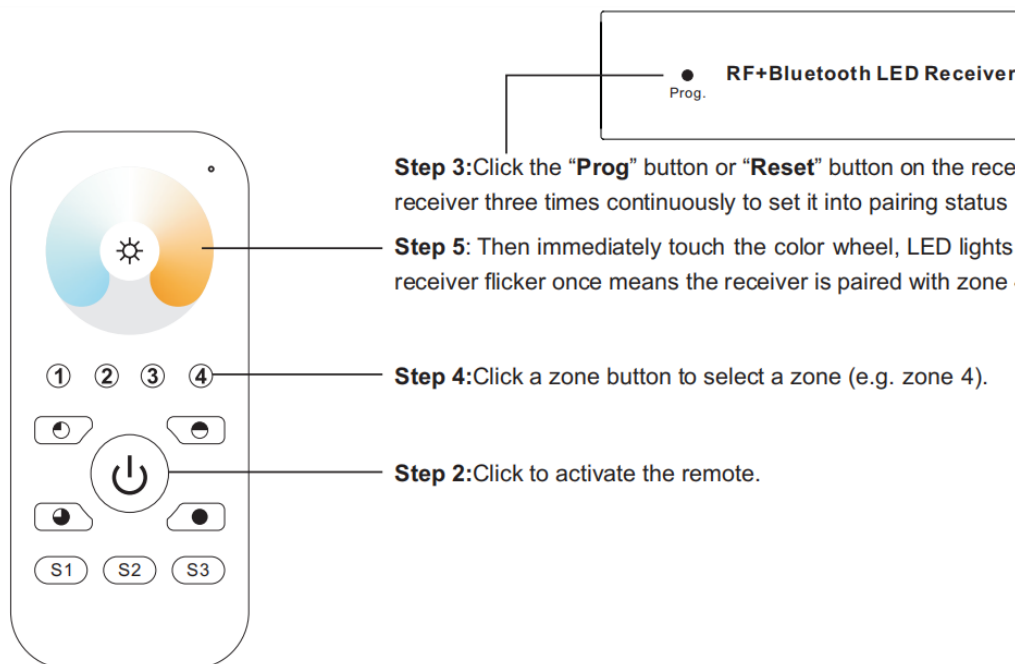
RF+Bluetooth CCT Remote Controller

Item number

CT-DL-1017

Pair with RF+Bluetooth Receiver

Step 1: Do wiring the receiver according to wiring diagram (please refer to the instruction of RF+Bluetooth receiver that you would like to pair with).



Step 3: Click the “Prog” button or “Reset” button on the receiver or re-power on the receiver three times continuously to set it into pairing status

Step 5: Then immediately touch the color wheel, LED lights connected with the receiver flicker once means the receiver is paired with zone 4 successfully.

Step 4: Click a zone button to select a zone (e.g. zone 4).

Step 2: Click to activate the remote.

If you use multiple receivers, you have two choices:

Option 1: have all the receivers in the same zone, like zone 1



Zone 1



RF remote

Option 2: have each receiver in a different zone, like zone 1, 2, 3 or 4



Zone 1



Zone 2



Zone 3



RF remote

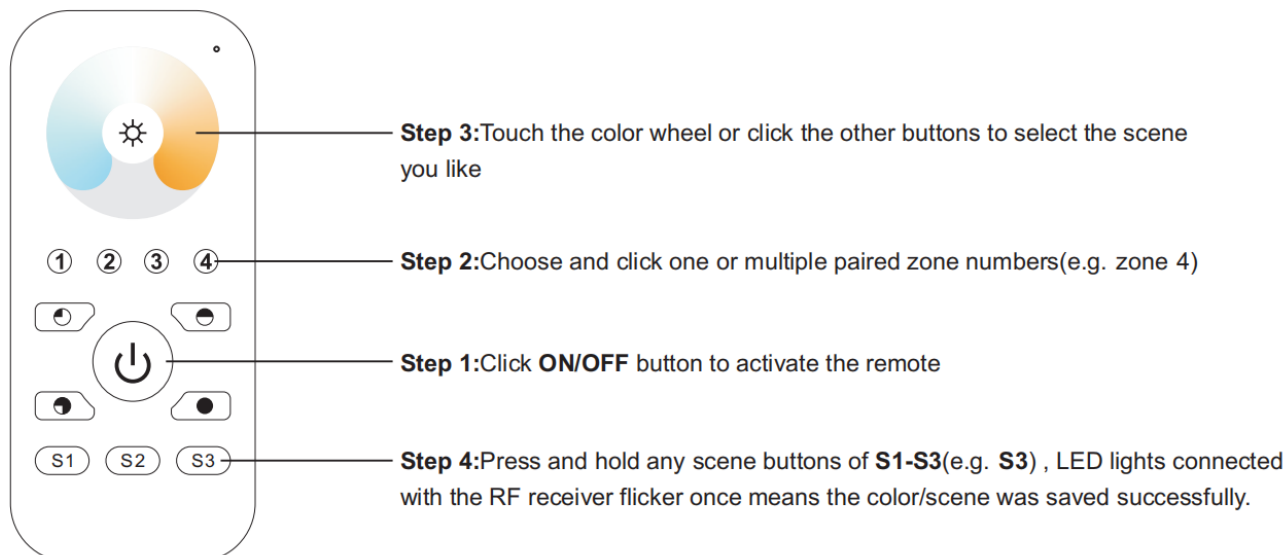
DATA SHEET

RF+Bluetooth CCT Remote Controller

Item number

CT-DL-1017

Save color / scene / mode



Recall the saved colors / scenes

